

↳ ⚠ Moving to the next question prevents changes to this answer.

Question 1

In , development starts from scratch, there is no prior systems.

- Interface Engineering
- Reverse Engineering
- Roundtrip Engineering
- Greenfield Engineering

↳ ⚠ Moving to the next question prevents changes to this answer.

▼ Question Completion Status:

↳ ⚠ Moving to the next question prevents changes to this answer.

Question 2

The make sure that there are no contradictions between requirements.

- Correctness
- Consistency
- Traceability
- Completeness



Moving to the next question prevents changes to this answer.

Question 3

..... describe the aspects of a model.

- Models
- Views
- Requirements Elicitation
- Notations

↳ ⚠ Moving to the next question prevents changes to this answer.

Question 4

..... is the restrictions on technology, resources or techniques to be used.

- Functional Requirement
- Non-functional Requirement
- Domain requirements
- Constraint Requirement

➤ ⚠ Moving to the next question prevents changes to this answer.

↳ ⚠ Moving to the next question prevents changes to this answer.

Question 5

Pseudo requirements describe

- User tasks that the system needs to support
- All the features of the system
- Aspects not directly related to functional behaviour
- Constraints imposed by the client or the environment

↳ ⚠ Moving to the next question prevents changes to this answer.

Question

Question 6

0.5 points

Save

Adaptability is

- The ability to change the system to deal with additional application domain concepts.
- The degree to which a system or component can function correctly in the presence of invalid inputs or stressful environment conditions.
- The degree to which a system or component is operational and accessible when required for use.

↳ ⚠ Moving to the next question prevents changes to this answer.

Question 7

In use case diagram, an actor should be

- The system
- A part of the system
- An internal entity
- An external entity

↳ ⚠ Moving to the next question prevents changes to this answer.

Question 10

The <<extends>> Relationship in the use case diagram is used to

- model exceptional or seldom invoked cases
- extends association from use case A to use case B
- indicates that an instance of use case A performs all the behavior described in use case B
- describe the function as the aggregation of a set of simpler functions.

↳ ⚠ Moving to the next question prevents changes to this answer.

Question 11

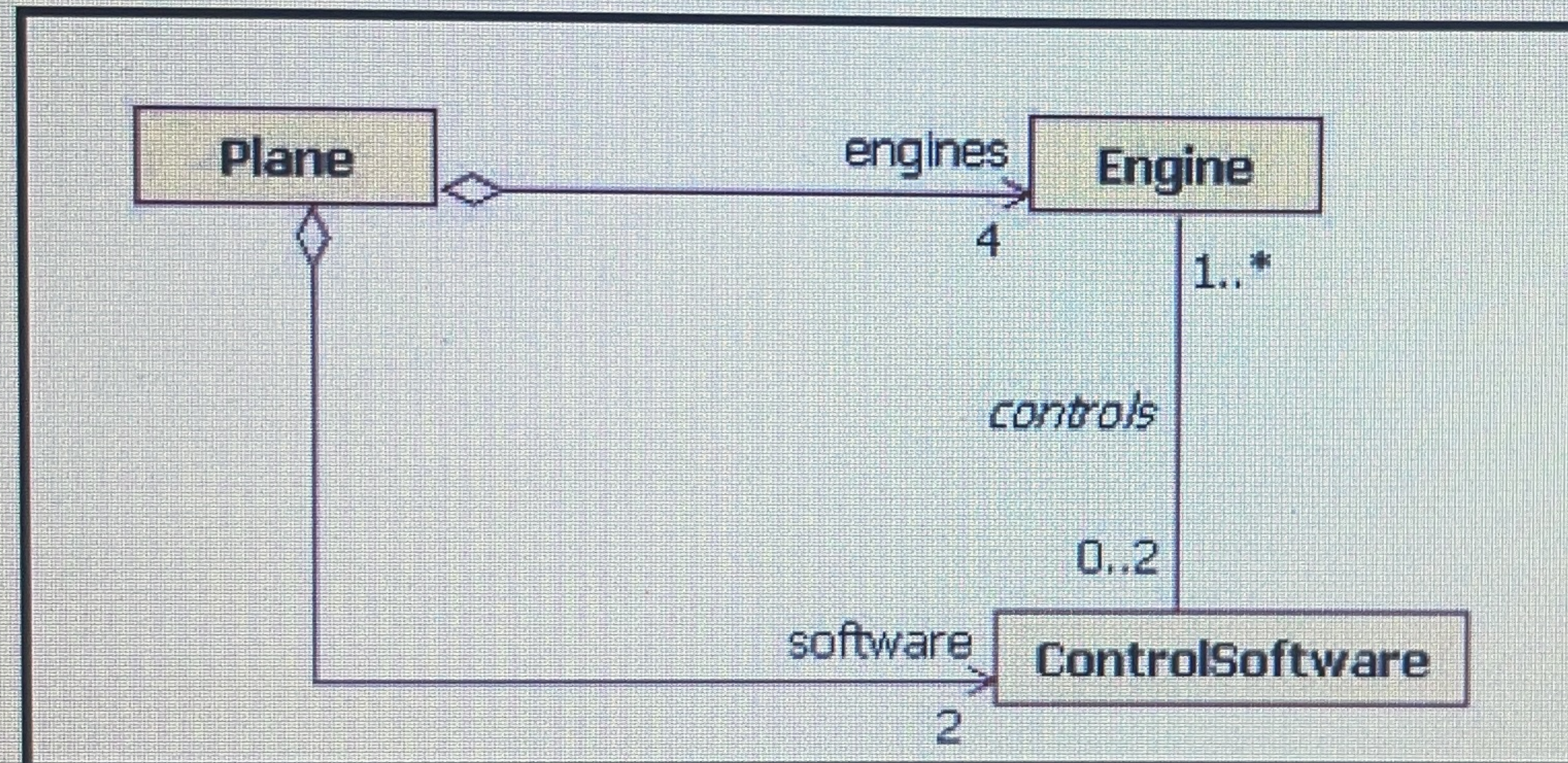
Inheritance relationship can be represented as

- Extend Relationship
- Include Relationship
- Generalization Relationship
- Composition relationship

→ ⚠ Moving to the next question prevents changes to this answer.

Question 12

In Figure_2, the relation between Engine and Plane is



- An aggregation
- An inheritance
- A simple association
- A composition

↳ ⚠ Moving to the next question prevents changes to this answer.

Question 13

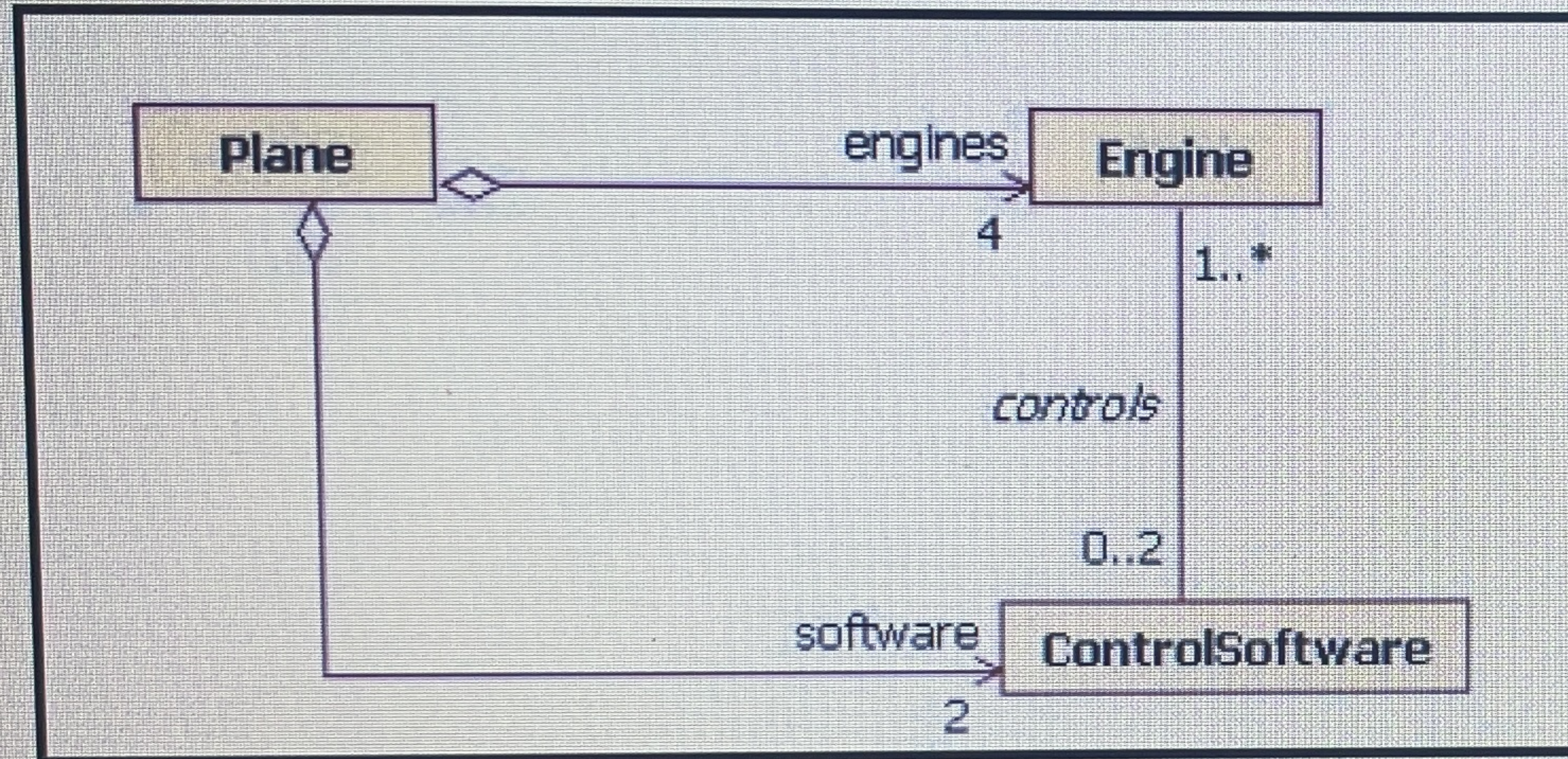
0.5 po

When a class consists of a collection of other classes, then the relationship between those classes is called

- a Taxonomy Relationship
- Association relationship
- Generalization relationship
- an Aggregation Relationship

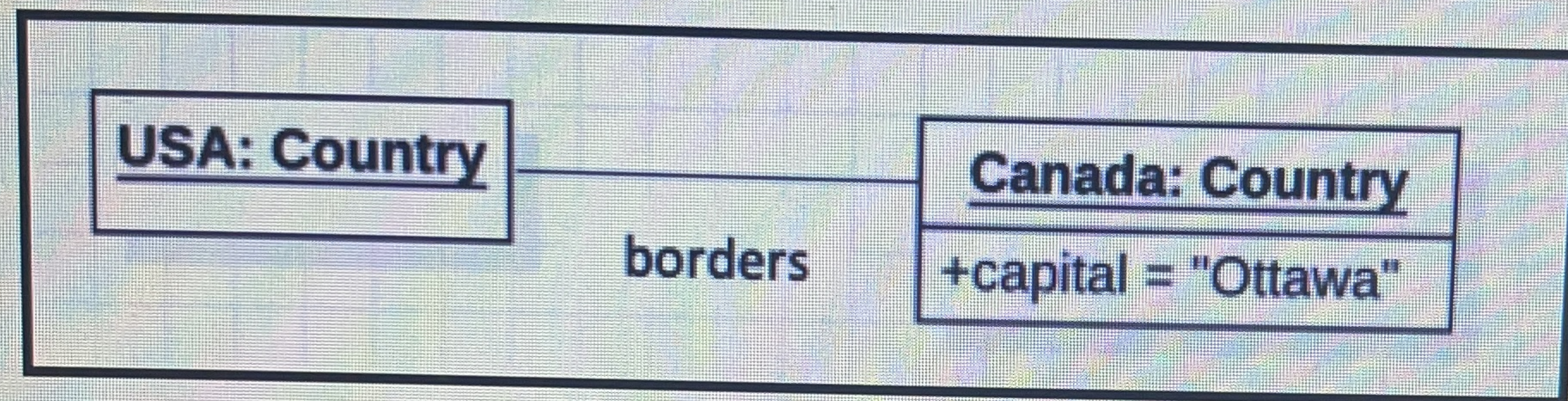
Question 15

From Figure_2, we understand that



- A plane is composed of maximum four engines.
- A plane aggregates exactly four engines.
- An engine is composed of maximum four planes.
- An engine aggregates of exactly four planes.

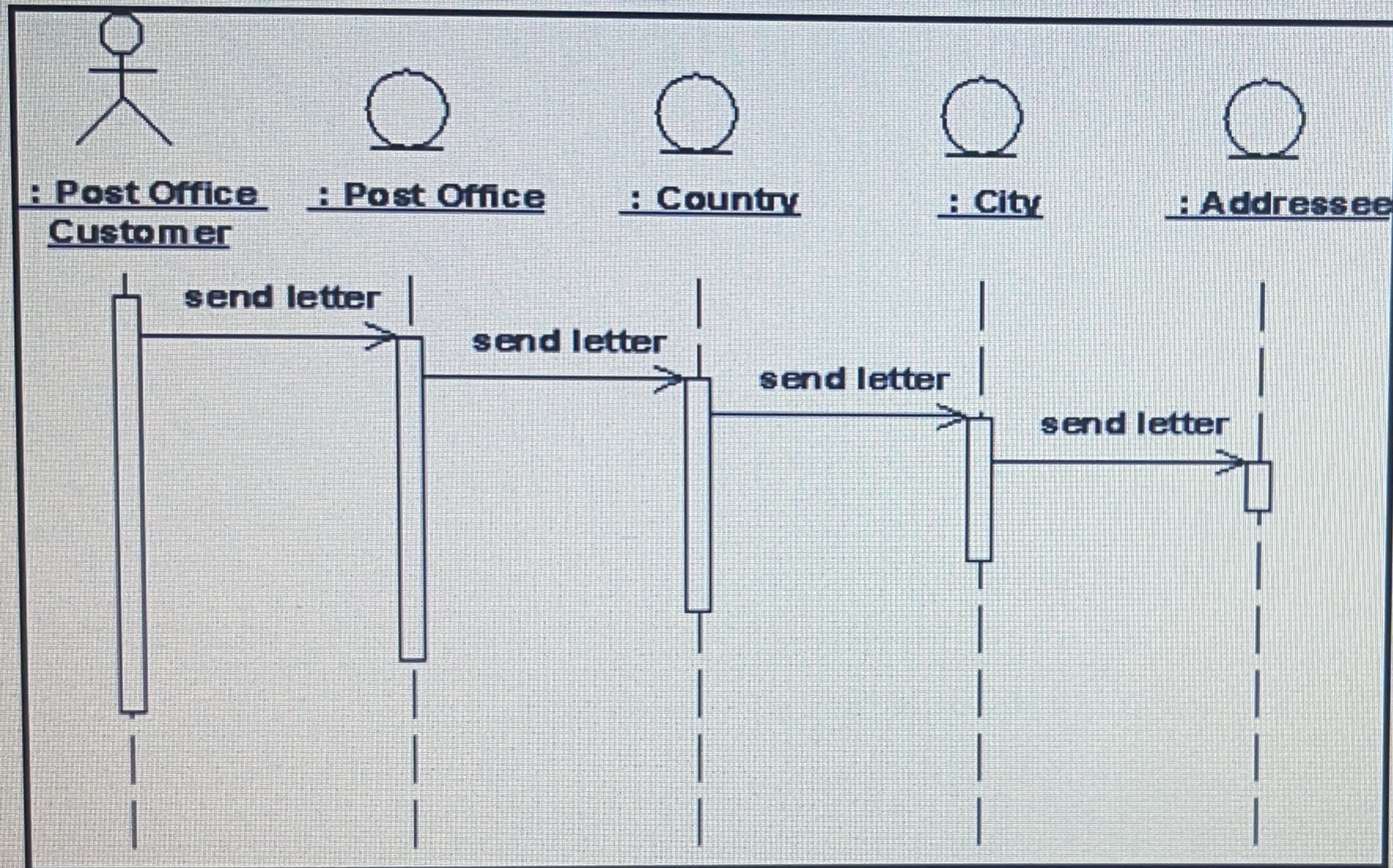
In figure_7, Ottawa is



- Value of an attribute
- A private attribute
- A static attribute
- A public attribute

Question 18

The UML diagram in figure 6 is a



- Stair sequence diagram
- Fork sequence diagram
- Class fork diagram
- Class stairdiagram

↳ ⚠ Moving to the next question prevents changes to this answer.

Question 19

The value of a read-only attribute can be modified during the execution.

- True
- False

↳ ⚠ Moving to the next question prevents changes to this answer.

↳ ⚠ Moving to the next question prevents changes to this answer.

Question 23

Complete the following definition with the appropriate UML diagram name:

diagram shows the operations involved in a process or in data processing.

↳ ⚠ Moving to the next question prevents changes to this answer.

→ ⚠ Moving to the next question prevents changes to this answer.

Question 25 of 27

Question 25

0.5 points

Save Answer

Complete the following definition with the appropriate UML diagram name:

diagram shows the important entities in the system and the relationships between these entities.

→ ⚠ Moving to the next question prevents changes to this answer.

Question 25 of 27

The figure below represents the use case diagram of a "convenience food store".

Write a discription of the this use case diagram

You have to mention:

- The Diagram name
- Actors
- Flow of Events
- Extended Situations
- Associations.

